

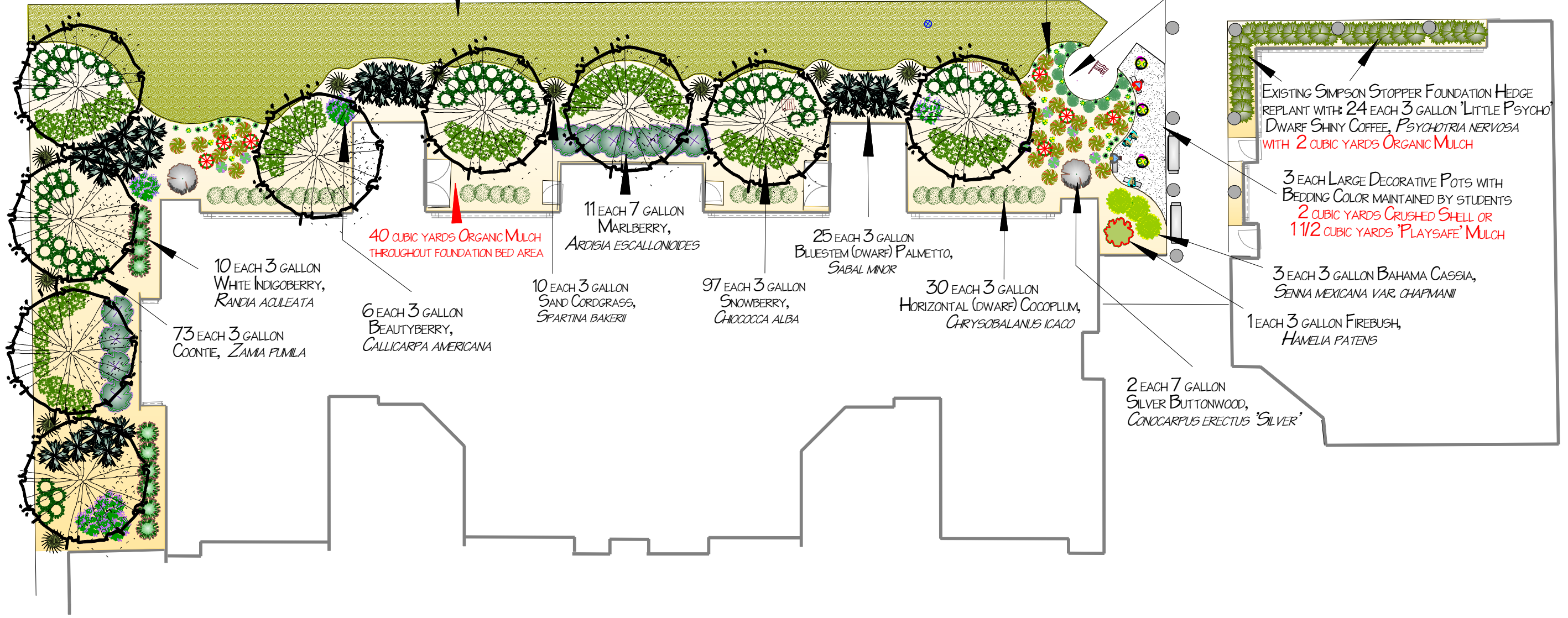
WILDFLOWER LEGEND

- 7 EACH 1 GALLON TROPICAL SAGE, *SALVIA COCCINEA*
- 7 EACH 1 GALLON IRONWEED, *VERNONIA GIGANTEA*
- 8 EACH 1 GALLON ROSINWEED, *SILPHUM ASTERISCUS*
- 11 EACH 1 GALLON LANCELEAF COREOPSIS, *COREOPSIS LANCEOLATA*
- 22 EACH 1 GALLON WILD PETUNIA, *RIELLIA CAROLINENSIS*

684 EACH 4 INCH PLUGS
RHIZOMAL PERENNIAL PEANUT / ECO-TURF,
ARACHIS GLABRATA
18 CUBIC YARDS ORGANIC MULCH
THROUGHOUT GROUND COVER AREA

24 EACH 3 GALLON MUHLY GRASS,
MUHLENBERGIA CAPILLARIS,
INTERPLANTED WITH ASSORTED
WILDFLOWERS (SEE LEGEND)

9 EACH 1 GALLON
ELLIOTT LOVE GRASS,
ERAGROSTIS ELLIOTTII



10 EACH 3 GALLON
WHITE INDIGOBERRY,
RANDIA ACULEATA

73 EACH 3 GALLON
COONTE, *ZAMIA FUMILA*

40 CUBIC YARDS ORGANIC MULCH
THROUGHOUT FOUNDATION BED AREA

6 EACH 3 GALLON
BEAUTYBERRY,
CALICARPA AMERICANA

11 EACH 7 GALLON
MARLBERRY,
ARDISIA ESCALLONOIDES

10 EACH 3 GALLON
SAND CORDGRASS,
SPARTINA BAKERII

97 EACH 3 GALLON
SNOWBERRY,
CHIOCCOCCA ALBA

25 EACH 3 GALLON
BLUESTEM (DWARF) PALMETTO,
SABAL MINOR

30 EACH 3 GALLON
HORIZONTAL (DWARF) COCOPLUM,
CHRYSOBALANUS ICACO

EXISTING SIMPSON STOPPER FOUNDATION HEDGE
REPLANT WITH: 24 EACH 3 GALLON 'LITTLE PSYCHO'
DWARF SHINY COFFEE, *PSYCHOTRIA NERVOSA*
WITH 2 CUBIC YARDS ORGANIC MULCH

3 EACH LARGE DECORATIVE POTS WITH
BEDDING COLOR MAINTAINED BY STUDENTS
2 CUBIC YARDS CRUSHED SHELL OR
1 1/2 CUBIC YARDS 'PLAYSAFE' MULCH

3 EACH 3 GALLON BAHAMA CASSIA,
SENNA MEXICANA VAR. CHAPMANII

1 EACH 3 GALLON FIREBUSH,
HAMELIA PATENS

2 EACH 7 GALLON
SILVER BUTTWOOD,
CONOCARPUS ERECTUS 'SILVER'

Revision #:
Date: 6/20/2018
Scale:
0' 1" = 20' 0"



Landscape Plan: Front Landscape Upgrades
Sunset Hills Elementary School
Landscape Design by: Bruce K. Turley
Wilcox Nursery and Landscape